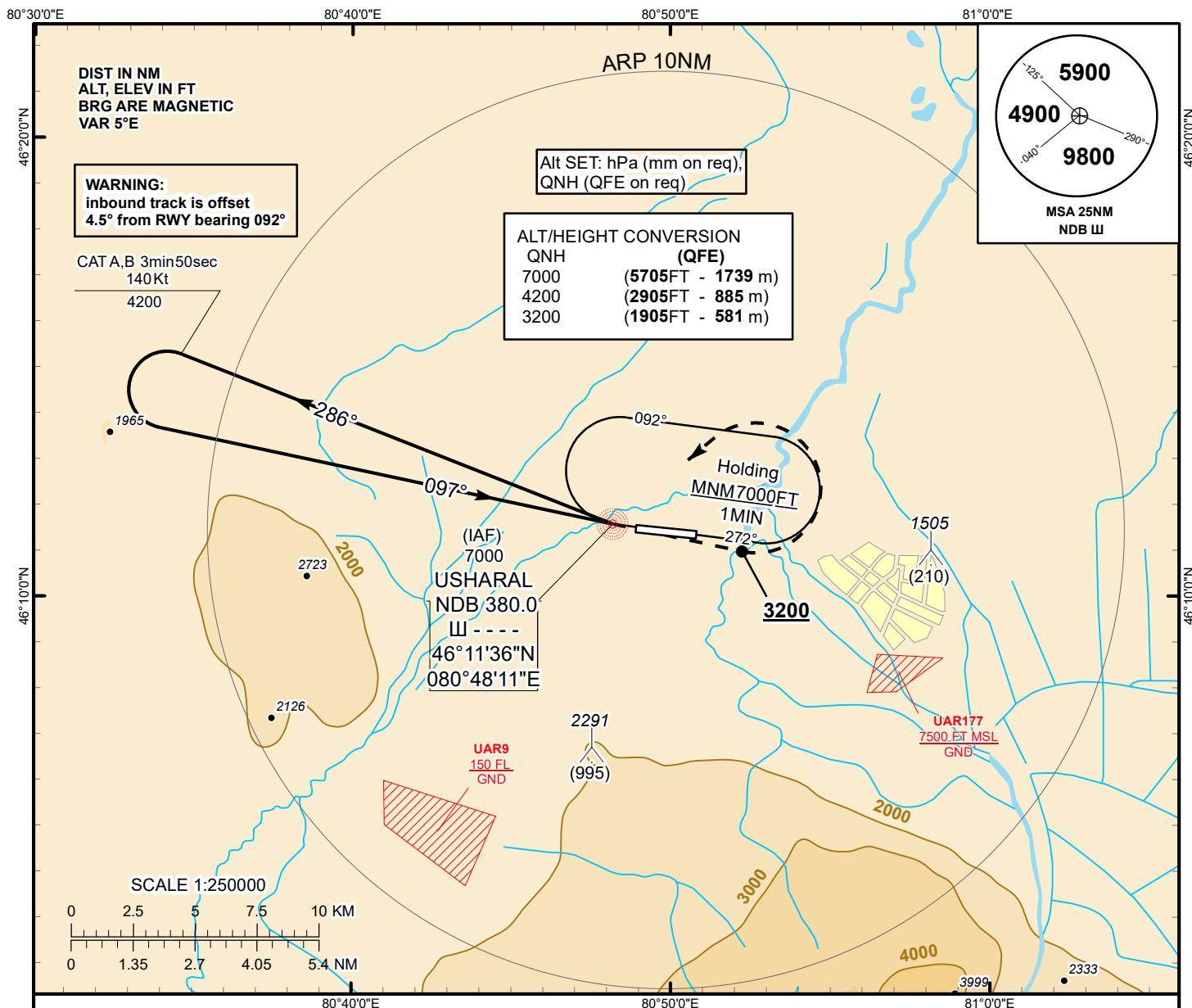


INSTRUMENT APPROACH  
CHART

AERODROME ELEV **1295ft**  
THR RWY 09 - ELEV **1295ft**  
HEIGHTS RELATED TO AD ELEV

USHARAL TOWER 118.1

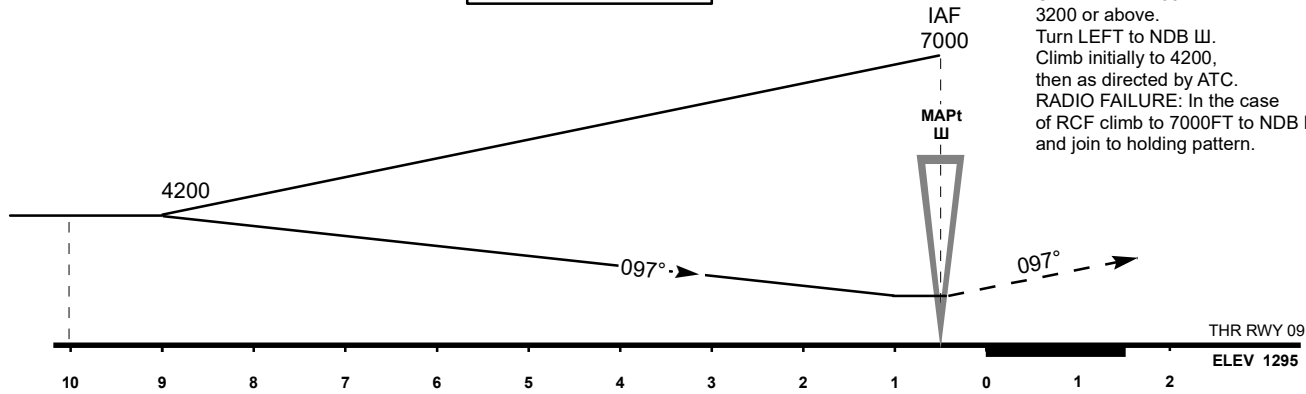
USHARAL  
NDB Y  
RWY 09



TRANSITION ALT  
10000 FT

MISSED APPROACH

Climb on track 097° to  
3200 or above.  
Turn LEFT to NDB W.  
Climb initially to 4200,  
then as directed by ATC.  
RADIO FAILURE: In the case  
of RCF climb to 7000FT to NDB W  
and join to holding pattern.



Aircraft Category		A	B		
Straight-in Approach OCA/H	NDB	2960 (1670)	2960 (1670)		
Aerodrome Operating Minima MDH ft x RVR(CMV)	NDB				

CHANGE: OCA/H.

USHARAL (UAAL)  
NDB Y RWY09

AERONAUTICAL DATA TABULATION

NDB approach to RWY09 from NDB Ш.	
Fix/point	Coordinates
Ш LMM NDB	46°11'35.8" N 080°48'11.3" E
THR RWY 09	46°11'32.67"N 080°48'44.77"E